

ORIGINAL ARTICLE

Landscape genetics informs mesohabitat preference and conservation priorities for a surrogate indicator species in a highly fragmented river system

J Lean¹, MP Hammer^{2,3}, PJ Unmack⁴, M Adams^{2,5} and LB Beheregaray¹

Poor dispersal species represent conservative benchmarks for biodiversity management because they provide insights into ecological processes influenced by habitat fragmentation that are less evident in more dispersive organisms. Here we used the poorly dispersive and threatened river blackfish (*Gadopsis marmoratus*) as a surrogate indicator system for assessing the effects of fragmentation in highly modified river basins and for prioritizing basin-wide management strategies. We combined individual, population and landscape-based approaches to analyze genetic variation in samples spanning the distribution of the species in Australia's Murray–Darling Basin, one of the world's most degraded freshwater systems. Our results indicate that *G. marmoratus* displays the hallmark of severe habitat fragmentation with notably scattered, small and demographically isolated populations with very low genetic diversity—a pattern found not only between regions and catchments but also between streams within catchments. By using hierarchically nested population sampling and assessing relationships between genetic uniqueness and genetic diversity across populations, we developed a spatial management framework that includes the selection of populations in need of genetic rescue. Landscape genetics provided an environmental criterion to identify associations between landscape features and ecological processes. Our results further our understanding of the impact that habitat quality and quantity has on habitat specialists with similarly low dispersal. They should also have practical applications for prioritizing both large- and small-scale conservation management actions for organisms inhabiting highly fragmented ecosystems.

Heredity advance online publication, 23 November 2016; doi:10.1038/hdy.2016.111

INTRODUCTION

Freshwater environments are naturally and anthropogenically fragmented because of physical features such as mountain ranges, waterfalls, cascades, dams and agriculture. The degree to which fragmentation affects species is directly influenced by their life-history traits and habitat preferences (Frankham *et al.*, 2010; Osborne *et al.*, 2014). For example, fragmentation can have a negligible effect in species with high dispersal abilities that are able to cross unsuitable landscapes between habitat patches (Boizard *et al.*, 2009; Faulks *et al.*, 2010). However, in species with low dispersal abilities, migration between patches can become impossible (Bilton *et al.*, 2001) that can result in severe demographic reductions and local extinctions, especially when habitat fragmentation is accompanied by habitat loss and degradation (Fahrig, 2003; Fagan *et al.*, 2005; McCraney *et al.*, 2010). Such scenarios are expected to lead to loss of genetic variation and inbreeding depression in populations of poor dispersers, negatively affecting their adaptive potential and long-term persistence (Hanski and Gaggiotti, 2004).

Landscape genetics contributes to the management of fragmented metapopulations by providing an environmental angle to identify associations between landscape features and ecological and

evolutionary processes. Landscape genetics combines information from spatial statistics and population genetic data sets to identify factors affecting population connectivity (Manel *et al.*, 2003). As such, it can clarify relationships between a species and its contemporary environment. Riverine environments provide ideal systems for landscape genetic surveys, as dispersal of obligate aquatic organisms is necessarily restricted to the river network. Thus, dispersal corridors and the associated habitat features can be better defined compared with many terrestrial and marine study systems (Wang *et al.*, 2009).

Landscape genetics allows assessment of connectivity, both functional (dispersal and gene flow) and structural (distance between patches and differing habitats), enabling statistical assessment of models of population structure. One such model is the stream hierarchy model that predicts that dispersal of riverine organisms is influenced by riverine distances between populations, and is therefore hierarchically constrained by the dendritic nature of the river basins (Meffe and Vrijenhoek, 1988; Fausch *et al.*, 2002; Hughes *et al.*, 2009). Being able to test predictions from spatial models of population structure can greatly improve our knowledge of the movements and habitat preferences of a species. This allows us to better direct

¹Molecular Ecology Laboratory, School of Biological Sciences, Flinders University, Adelaide, South Australia, Australia; ²Evolutionary Biology Unit, South Australian Museum, North Terrace, Adelaide, South Australia, Australia; ³Curator of Fishes, Museum and Art Gallery of the Northern Territory, Darwin, Northern Territory, Australia; ⁴Institute for Applied Ecology and Collaborative Research Network for Murray–Darling Basin Futures, University of Canberra, Canberra, Australian Capital Territory, Australia and ⁵School of Biological Sciences, University of Adelaide, Adelaide, South Australia, Australia

Correspondence: Professor LB Beheregaray, Molecular Ecology Laboratory, School of Biological Sciences, Flinders University, Adelaide, South Australia 5001, Australia. E-mail: Luciano.Beheregaray@flinders.edu.au

Received 7 February 2016; revised 27 September 2016; accepted 27 September 2016

conservation initiatives, predict metapopulation scenarios and plan for future threats (see, for example, Hopken *et al.*, 2013).

To date, most landscape genetic studies on freshwater fishes (that is, riverscape genetics) have focused on medium- to large-bodied species with relatively high migration potential (Wofford *et al.*, 2005; Whiteley *et al.*, 2006; Faulks *et al.*, 2010). Very few studies have been conducted on benthic, low dispersal species that display traits that make them more susceptible to habitat fragmentation (McCraney *et al.*, 2010; Hopken *et al.*, 2013; Roberts *et al.*, 2013). In addition, most studies have predominantly focused on the impact that barriers or landscapes variables have on population connectivity, or gene flow, with only a few assessing the impact of the local environment on population genetic diversity (Cena *et al.*, 2006; Faulks *et al.*, 2010, 2011). Yet, it is these landscape genetic studies that identify which species-specific habitats are best able to support larger, and consequently, healthier populations that are likely to provide the most valuable information to guide basin-wide conservation efforts.

Here we use population and landscape genetic approaches to study a surrogate indicator species. Species-based biodiversity surrogates, such as indicator species, provide valuable alternatives for assessing the complex impacts of habitat fragmentation on ecosystems (Rodrigues and Brooks, 2007). Indicator species can be treated as proxies that monitor or reflect the presence, abundance or richness of other elements of biota, critical ecosystem processes or particular environmental impacts (Lindenmayer and Likens, 2011). We assess the influence of riverine configuration and habitat features on the population structure and genetic diversity in a poor dispersal and threatened freshwater fish from Australia's vast Murray–Darling Basin (MDB). The MDB is Australia's most important agricultural region, accounting for 41% of the national agricultural income and 60% of its water use (CSIRO, 2008), despite being characterized by low and variable rainfall and severe droughts. Reflecting these paradoxical attributes, the MDB is one of the world's most degraded freshwater systems (Palmer *et al.*, 2008). Large modification to flow regimes, extensive agriculture, land clearing, invasive species, in-stream barriers to fish passage and habitat modification throughout the MDB have together led to a highly fragmented environment (Jackson and Williams, 1980; Allison *et al.*, 1990; Lintermans, 2007). To alleviate the anthropogenic pressures placed on threatened species in the MDB, an understanding of the key environmental features influencing population demography is clearly needed before sound conservation initiatives can be designed and implemented.

Our study species is the river blackfish *Gadopsis marmoratus* (Percichthyidae), and specifically the small-growing form found in the MDB (size <350 mm total length; candidate species 'NMD', *sensu* Hammer *et al.*, 2014). All members of the *G. marmoratus* species complex are regarded as a habitat specialist, with a strong preference for microhabitats with low levels of sediment, slow-flowing, deep pools and high structural integrity from undercut banks, woody debris and large rocks (Khan *et al.*, 2004; Koster and Crook, 2008). Furthermore, they have a relatively small home range, low fecundity and demersal larvae that inhabit dense cover (Jackson, 1978; Khan *et al.*, 2004; Koster and Crook, 2008). Populations of *G. marmoratus* across the MDB have declined dramatically in their extent of occurrence and abundance since European settlement, especially for heavily regulated large river environments and areas with less reliable rainfall (Lake, 1971; Lintermans, 2007). This decline is formally recognized at the northern and southern edges of the MDB with the species protected under fisheries legislation in Queensland and South Australia, respectively, with other regional populations outside the MBD also listed as threatened (that is, upper Wannon River, Victoria

and Snowy River, New South Wales). Several genetic data sets are available for the *G. marmoratus* complex (Sanger, 1984; Ovenden *et al.*, 1988; Miller *et al.*, 2004; Ryan *et al.*, 2004; Hammer *et al.*, 2014), but these were not directed at analyses of population genetic variation, connectivity and landscape genetics.

Limited dispersal capabilities, threatened status and anthropogenically altered habitat make *G. marmoratus* an ideal surrogate indicator species on which to use a landscape genetics approach to explore how habitat features and fragmentation influence ecosystem-wide contemporary genetic architecture. To provide the appropriate detailed genetic resolution, we employed a suite of recently developed microsatellite markers (Arias *et al.*, 2013) and a comprehensive sampling of catchments and localities across the MDB. We expect *G. marmoratus* populations to exhibit low genetic diversity and high levels of population structure. We further predict that genetic diversity will be positively influenced by the frequency of slow-flowing pools and perenniality as measures of microhabitat availability (see, for example, Bond and Lake, 2005), and negatively influenced by sedimentation and riparian damage (habitat limiting). The anthropogenic pressures currently placed on *G. marmoratus* in the MDB are likely to persist into the future, a scenario exacerbated because of global climate warming (Balcombe *et al.*, 2011). Therefore, we use our findings to develop targeted management recommendations that prioritize conservation resources across the basin while maintaining and enhancing population genetic diversity. Our results should shed further light on the influence that habitat quality and quantity imposes on habitat specialists with similarly low dispersal, plus provide practical guidelines for prioritizing conservation management actions, at a range of spatial scales, for organisms inhabiting highly fragmented aquatic ecosystems.

MATERIALS AND METHODS

Study system and samples

The MDB is an expansive river system, occupying most of south-eastern Australia (>1 million km²). The broad climate shifts from cool temperate in the south to semi-arid in the north and west, with a fringe of cooler upland habitat in two areas of topographic relief: (1) the Great Dividing Range in the east and south, the third longest land-based ridge in the world; and (2) the smaller Mount Lofty Ranges (elevation 200–480 m). The majority of stream flow is generated in these upland areas (Leblanc *et al.*, 2012), with a series of major tributaries arising along the Great Dividing Range draining into two main rivers, the Murray and the Darling. The lower Murray River exits into the Southern Ocean via the Lower Lakes. Small tributary streams flow off the eastern Mount Lofty Ranges into the Lower Lakes and lower Murray River (Figure 1).

A total of 332 *G. marmoratus* individuals (whole fish in liquid nitrogen or fin clips in 100% ethanol) were collected between 1999 and 2013 from 29 sites encompassing 14 catchments and 3 broad regions of the MDB, namely the Upper Darling, Upper Murray and lower Murray (Figure 1 and Supplementary Table S1). Five sites in the lower Murray, the subject of regular threatened species monitoring (Hammer *et al.*, 2013), were represented by multiple temporal-sampling events to reach a suitable sample size (MAR, ROD, ARS, NAN, TOO: Supplementary Table S1). In three small stream systems, three samples represented a composite of spatially proximate sites (<1 km apart: TOO, ARS, KBC). All genotypes from the 29 sites were retained for individual-level analyses (Supplementary Table S1), whereas population-level analyses were carried out only on 12 site samples that had ≥8 individuals (Table 1).

Genetic variation

Genomic DNA was extracted using a modified salting out protocol (Sunnucks and Hales, 1996). Twelve polymorphic microsatellite loci developed specifically for the MDB *G. marmoratus* were amplified via the PCR: Gama01, 02, 03, 04, 05, 06, 07, 08, 09, 10, 12 and 13 (Arias *et al.*, 2013). Reagent concentrations and

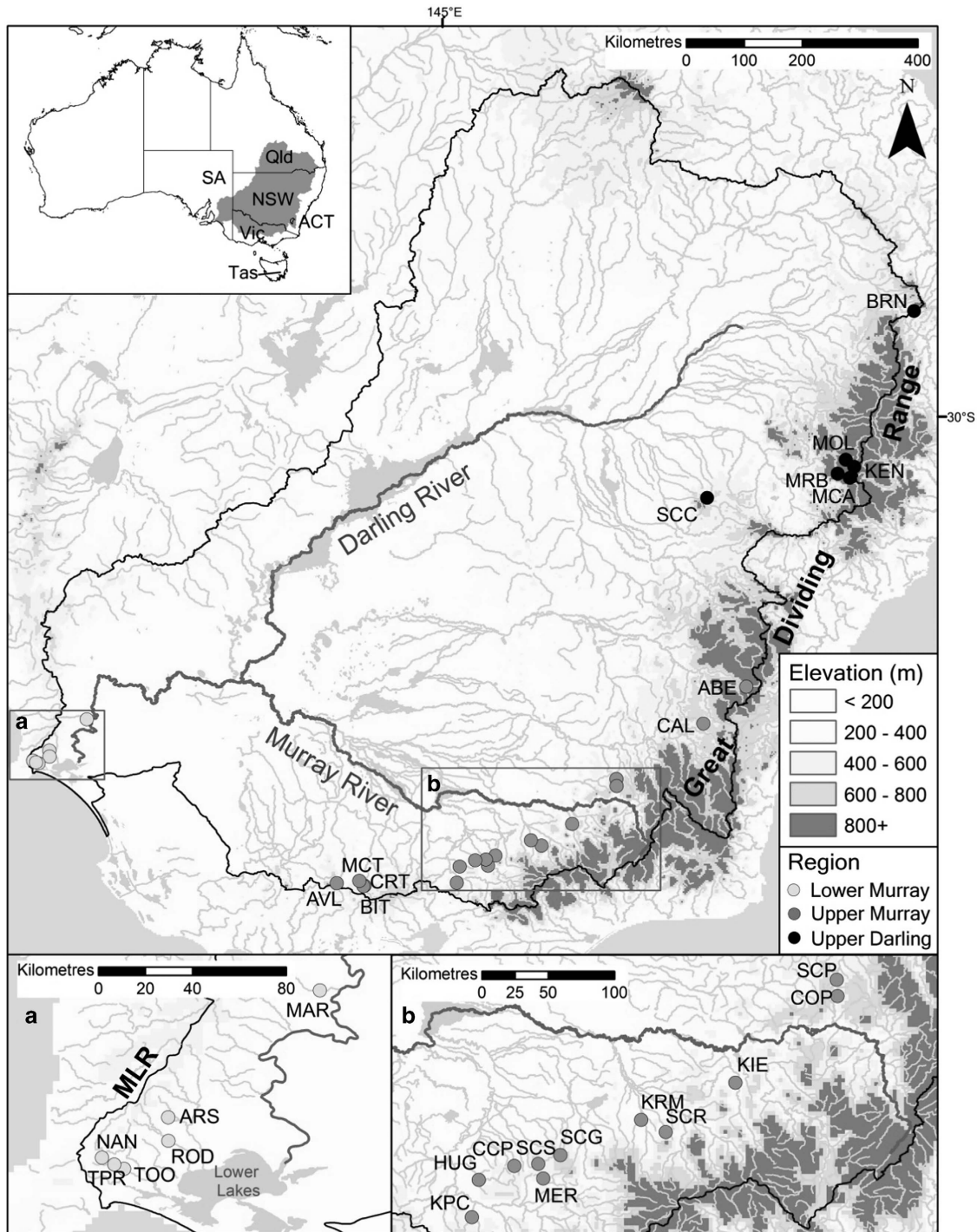


Figure 1 Sampling sites for the river blackfish *G. marmoratus* in the MDB. The top inset shows the location of the MDB study region in Australia, the lower insets show further detail on sites in (a) the Mount Lofty Ranges and (b) central Victoria. Sites are grouped into one of three major regions in the MDB (see key) and three letter site codes follow Supplementary Table S1.

the touchdown PCRs follow Beheregaray and Sunnucks (2000). The PCR products were screened on an ABI 3730xl automated DNA sequencer (Applied Biosystems, Foster City, CA, USA) and alleles called using GENEMAPPER 4.0 (Applied Biosystems). MICRO-CHECKER 2.2.3 (Van Oosterhout *et al.*, 2004) was used to assess scoring errors and null alleles.

Fisher's exact test for linkage disequilibrium between all pairs of loci and an exact test for deviations from Hardy-Weinberg equilibrium were carried out in GENEPOP 4 (Raymond and Rousset, 1995), adjusted for multiple comparisons

using sequential Bonferroni (Rice, 1989). Rarefied allelic richness (A_r) and rarefied private allelic richness (P_a) (controlled for a population size of five) was calculated using HP-RARE (Kalinowski, 2005). The latter uses rarefaction to compensate for sampling bias due to a larger number of alleles expected in large sample sizes compared with small sample sizes (Leberg, 2002). The observed (H_o) and expected heterozygosity (H_E) per population and per locus was calculated in ARLEQUIN 3.5.1.3 (Excoffier and Lischer, 2010). The inbreeding coefficient (F_{is}) was calculated using FSTAT 2.9.3 (Goudet, 2001) for each

Table 1 Summary statistics for *Gadopsis marmoratus* in the MDB based on 12 microsatellite DNA markers

	Site (code)	N	Na (± s.d.)	% Poly loci	Ar	Pa	F _{IS}	HWE	H _o	H _E	Pop.-specific F _{st}
Upper Darling	Browns Ck (BRN)	37	1.92 (0.38)	50%	1.65	0.00	0.04	0.002	0.47	0.49	0.689
	Molong Ck (MOL)	6	2.00 (0.17)	83%	1.92	0.08	0.19	0.751	0.35	0.43	0.516
	Shawns Ck (SCC)	35	2.83 (0.41)	83%	1.79	0.33	0.17	0.000	0.21	0.25	0.503
Upper Murray	Abercrombie R (ABE)	5	2.17 (0.21)	92%	2.09	0.17	0.61	0.047	0.20	0.47	0.488
	Catherines Ck (CAT)	9	2.42 (0.31)	92%	2.10	0.00	0.59	0.000	0.16	0.38	0.498
	Stony Ck (SCP)	5	3.08 (0.36)	83%	2.90	0.25	0.49	0.001	0.36	0.66	0.252
	Scrubby R (SCR)	22	2.58 (0.34)	83%	2.15	0.08	0.14	0.062	0.43	0.50	0.501
	Hughes Ck (HUG)	30	3.42 (0.49)	92%	2.38	0.50	-0.03	0.128	0.48	0.46	0.428
	King Parrot Ck (KPC)	26	2.08 (0.38)	58%	1.57	0.17	0.16	0.005	0.28	0.33	0.641
	Birch Ck (BIT)	5	3.08 (0.40)	92%	2.88	0.42	0.12	0.450	0.51	0.57	0.250
	Creswick Ck (CRT)	5	2.67 (0.376)	75%	2.54	0.17	-0.04	0.198	0.69	0.66	0.323
	Avoca R (AVL)	10	3.33 (0.36)	92%	2.55	0.17	0.42	0.000	0.29	0.49	0.290
Lower Murray	Marne R (MAR)	8	2.83 (0.35)	83%	2.42	0.08	0.03	0.957	0.55	0.57	0.336
	Angas R (ARS)	32	2.33 (0.26)	83%	1.63	0.08	0.14	0.389	0.28	0.33	0.613
	Rodwell Ck (ROD)	29	3.08 (0.40)	83%	2.25	0.17	0.19	0.000	0.40	0.49	0.417
	Nangkita Ck (NAN)	18	3.33 (0.50)	100%	2.26	0.25	0.33	0.000	0.26	0.38	0.386
	Tookayerta Ck (TOO)	24	3.67 (0.61)	92%	2.30	0.25	0.37	0.000	0.28	0.45	0.390
Average		18	2.75 (0.10)	83%	2.20	0.19	0.23		0.37	0.39	Global F _{st} =0.45

Abbreviations: HWE, Hardy–Weinberg equilibrium; MDB, Murray–Darling Basin. Number of individuals genotyped at each site (N), average number of alleles per locus (Na), percentage of polymorphic loci (% poly loci), allelic richness (Ar), proportion of private alleles (Pa), inbreeding coefficient (F_{IS}), HWE P-values, observed heterozygosity (H_o) and expected heterozygosity (H_E) and the population-specific F_{st}. Bold P-values indicate significant deviations after Bonferroni correction. Only sites with ≥ 5 individuals are included (see Supplementary Table S1 for details).

population. A nonparametric Wilcoxon signed-rank test was used to assess differences in genetic diversity (Ar and H_E) between populations.

Genetic structure and assignment tests

The allele size permutation test in SPAGeDi 1.3d (Hardy and Vekemans, 2002) indicated that F_{st} was more appropriate than R_{st} as an index for assessing population differentiation. Thus, population pairwise comparisons were carried out in Arlequin using F_{st} that was also used to assess temporal variation in population structure at sites with multiple samples (Supplementary Table S1). The latter disclosed no significant differentiation and thus samples from different years were pooled for further analyses. In addition, an analysis of molecular variance (AMOVA) based on F_{st} was conducted in ARLEQUIN to assess the fit of predictions from the stream hierarchy model by partitioning genetic variation by differences between sites within streams, as well as streams within catchments and catchments within regions. The significance levels for all F_{st} and AMOVA comparisons were assessed using 10 000 permutations.

STRUCTURE 2.3.4 (Pritchard *et al.*, 2000) was used to determine the most likely number of population clusters using the correlated allele frequency model, and not using sampling locations as priors. Twenty STRUCTURE runs were carried out, each with 20 separate iterations and 1 million Markov chain Monte Carlo replicates after an initial burn-in period of 300 000. The most likely number of clusters (K) was chosen following Evanno *et al.* (2005) and assessed with STRUCTURE HARVESTER (Earl and vonHoldt, 2012). The results were combined using CLUMPI1.1.2 (Jakobsson and Rosenberg, 2007) and visualized using DISTRUCT 1.1 (Rosenberg, 2004). All above analyses were conducted using 12 population samples.

Individual multilocus assignment tests were carried out using the Bayesian approach of Rannala and Mountain (1997). Assignment tests were used to determine the population of origin of fish from sites with small sample sizes and to assess the proportion of individuals assigned to their sampling population. The latter assignment is based on higher than average probability of being born locally and provides a measure of natal site philopatry (see, for example, Möller and Beheregaray, 2004). This was carried out in GENECLASS 2 (Piry *et al.*, 2004) by simulating 10 000 individuals and using an assignment threshold of 0.01

Spatial population structure

Isolation by distance (IBD) predicts genetic differentiation as a function of geographic distance and is considered the baseline for evaluating more complex metapopulation scenarios that may exceed the ability of IBD to represent spatial pattern in genetic structure (Jenkins *et al.*, 2010). We assessed IBD at regional scales with Mantels tests in IBDWS (Bohonak, 2002) by comparing population pairwise matrices of F_{st} with stream distance matrices calculated in ARCMAP 10.1 (ESRI 2012, Redlands, CA, USA). Three separate regional IBD tests were carried out: across all sites, across the Upper Murray and across the lower Murray. The IBD test was not carried out for the Darling region because it was represented by only three sites.

Analysis of migration

Contemporary levels of connectivity were assessed by estimating migration rates between inferred population clusters using BAYESASS 3.0 (Wilson and Rannala, 2003). BAYESASS estimates recent (last two generations) migration rates between population pairs. The assumptions associated with this analysis (that is, no linkage between loci, F_{st} values >0.05) hold for our population samples. Ten million iterations were carried out for the Markov chain Monte Carlo analysis, with the initial 1 million being discarded as burn-in. Samples intervals of 100 were used to estimate posterior probabilities. Delta values for migration rates, allele frequencies and inbreeding coefficients were set at 0.15, 0.46 and 0.65, respectively. Different random seeds were used to carry out six independent runs.

Influence of genetic differentiation on genetic diversity

This was assessed following Coleman *et al.* (2013), who suggested that prioritizing management on differentiation alone may be detrimental to the maintenance of genetic diversity because of the strong negative relationship usually found between population differentiation and diversity. Population-specific F_{st} was calculated using a hierarchical Bayesian approach in Geste 2.0 (Foll and Gaggiotti, 2006) to determine the level of differentiation of each population relative to other populations. Linear regression was then used to assess the relationship between genetic uniqueness (population-specific F_{st}) and diversity (Ar and H_E). The associated normality assumptions were tested using the Shapiro–Wilk test and independent histograms in IBM SPSS Statistics 2.1 (Chicago, IL, USA). Linear regression was carried out on Ar and H_E and associated significance tested in R 3.0.1 (Vienna, Austria). As Ar and H_E were

highly correlated (results not shown), only A_r was used for subsequent analysis, as it is more sensitive to recent changes in population size and genetic diversity (Nei *et al.*, 1975). The significance and strength of the relationship between F_{st} and A_r was also determined as above.

Landscape genetics

Landscape genetics was used to determine the impact of five habitat features on genetic variation (A_r) of demes from the 12 sites with larger sample sizes. Surrogates were used to represent meaningful habitat features based on expert opinion and field observations. These were the sum of the average proportion of grid cells used for forestry, intensive animal and plant production (that is, land use) which were used as a surrogate for sedimentation (Trimble and Mendel, 1995; Croke and Hairsine, 2006). The average difference in altitude over each upstream grid cell (that is, slope) was used as a surrogate for the frequency of deep slow-flowing pools. The distance between the nearest upstream and downstream dam (that is, barrier) was used as a surrogate for potential river area. The percentage flow contribution to mean annual discharge by the six driest months of the year (that is, perennality) was used to represent fluctuations in available habitat. Finally, the percentage of the grid cells where industrial, agricultural, urban and point source pollution exists (that is, modified land) was used as an indicator of overall human impacts. Data were sourced from the National Catchment and Stream Environment Database 1.1.5 (Stein, 2012), available as part of the Geofabric products associated with the 9 s Digital Elevation Model (DEM)-derived streams and the National Catchment Boundaries. The segment number from the GEODATA national 9 s DEM that corresponds to sample sites was identified in ARCMAP. These were used to identify environmental characteristics linked to the stream layer in the database using ARCMAP. The mean value from all upstream grid cells was used for the predictor variables as it is likely that habitat features upstream from the sampling site have an impact on habitat in the downstream segments. Normality of all response variables was assessed as outlined above and transformations were made where necessary. Collinearity assumptions were assessed by examining the significance of pairwise correlations between all predictor variables. Perennality was significantly correlated with both slope and land use (Supplementary Table S2) and modified land could not be transformed to meet normality. These two variables were removed from further analyses.

The log likelihoods of the linear modes for all possible combinations of the three candidate environmental variables influencing genetic variation was calculated in the `all.regs` function of R `hier.part` package (Walsh and Macnally, 2008). The best models were then selected using AIC_c (Akaike's information criterion adjusted for small sample sizes; Akaike, 1973) and the hierarchical partitioning function in the `hier.part` package used to assess the individual contribution of each variable to the full model. Recent criticism has been made about the use of linear regression and AIC_c in landscape genetics because of the non-independence of explanatory variables (Legendre and Fortin, 2010; Van Strien *et al.*, 2012). The new approaches suggested to overcome these issues relate to comparison of distance matrices (Van Strien *et al.*, 2012) that is not suitable for our analysis based on A_r . An analysis of variance was carried out on each of our four highest ranked models to test whether models significantly explained the variation in A_r across sites. Finally, hierarchical linear regression was carried out to determine which variables significantly contributed to the predictive power of each model. We considered a model to be meaningful if it had a positive or negative regression coefficient, significantly accounted for variation in A_r (analysis of variance $P < 0.05$) and each variable entered had a significant contribution to the predictive power of the model ($P < 0.05$).

RESULTS

Data quality and low levels of genetic variation

Missing data accounted for only 0.3% of the genotypes and these were spread evenly over populations and loci. No significant linkage disequilibrium was identified after sequential Bonferroni correction. There was no evidence of scoring errors. MICRO-CHECKER suggested null alleles in 8 loci, but the results were not consistent across the 12 population samples. Gama03 was the only locus with evidence

for null alleles in two populations (SCC and TOO). All analyses were run with and without Gama 03 and produced similar results. Deviations from Hardy–Weinberg equilibrium were evident in 7 out of 17 populations; these were mostly because of excess of homozygotes (Table 1).

Overall genetic diversity was strikingly low with an average A_r of only 2.2 alleles (Table 1). Average number of alleles within populations was also low, ranging from 1.92 (BRN) to 3.67 (TOO). There were significant differences in A_r ($P < 0.001$) and H_E ($P < 0.001$) between populations. Allelic richness ranged from 1.57 (KPC) to 2.9 (SCP) and H_E ranged from 0.25 (SCC) to 0.66 (CRT and SCP). In particular, populations BRN and KPC showed lowest diversity, including lowest percentage of polymorphic loci (50% and 58%, respectively). High and mostly significant F_{IS} values, suggestive of inbreeding, were found in most populations (overall average $F_{IS} = 0.23$; Table 1).

Population structure

The global F_{st} was very high ($F_{st} = 0.45$, $P < 0.001$), indicating marked population differentiation for *G. marmoratus* across the MDB. All pairwise population comparisons were significant, with F_{st} ranging from 0.13 to 0.67 (Supplementary Table S3).

AMOVA identified basin-level differentiation only between the Upper Darling and lower Murray ($P = 0.019$), suggesting that populations are not structured mainly as a consequence of regional differences. On the other hand, both the catchment- and the regional-level AMOVAs identified that the largest amount of the total variation was accounted for by differences between populations, both between catchments and within streams within catchments ($P < 0.01$). This indicates that populations within catchments are more related and that catchment hierarchy explains a significant level of differentiation (Table 2).

In terms of IBD results, the Mantel tests using pairwise population F_{st} and pairwise stream distances matrices identified no correlation between the two variables and therefore did not support a pattern of IBD. This result was consistent across all regional scales tested (Supplementary Table S4).

STRUCTURE analysis indicated a value for K of 11 populations (Figure 2). Populations were well defined, with either low or no admixture between clusters. Only one of the inferred clusters was represented by more than one sampling site (streams NAN and TOO); these are the two closest sites in our study, separated by only 11 km. Samples from these sites were pooled together for the BAYESSASS migration analysis. A few admixed individuals are also apparent in the STRUCTURE graph (Figure 2), but these were generally found between sites with smaller sample sizes (for example, AVL and MAR) that probably relates to our reduced ability to estimate allele frequency for these populations (Evanno *et al.*, 2005). All potential cases of admixture were successfully assigned to their sampled populations via assignment tests. A high proportion of individuals in all 11 populations (97%; range of 89–100%) had multilocus genotypes that assigned to their sampled population based on GENECLASS results (Supplementary Table S5). Fish from the undersampled locations ($n \leq 5$) were not assigned to any of the 11 population clusters (Supplementary Table S5).

BAYESSASS did not identify significant migration between groups at any of the hierarchical levels (that is, within catchments, between catchments and between regions; Table 3). The majority of tests indicated ~2% of migrant ancestry from other populations, with confidence intervals with a lower bound overlapping zero. The only exception to this is the unidirectional gene flow of 17% from MAR to SCR, but this could be related to MAR having a small sample ($n = 8$)

Table 2 Analysis of molecular variance (AMOVA) for *Gadopsis marmoratus* in the Murray–Darling Basin

Source of variation	d.f.	Percentage of variation	F-statistics	P-value
(a)				
Among basins	1	3	0.03	0.207
Among populations within basins	12	38	0.41	0.000
Among individuals within populations	442	58	0.39	0.000
(b)				
Among basins	1	9	0.09	0.059
Among populations within basins	10	39	0.48	0.000
Among individuals within populations	378	52	0.43	0.000
(c)				
Among basins	1	22	0.21	0.019
Among populations within basins	6	31	0.53	0.000
Among individuals within populations	370	47	0.40	0.000
(d)				
Among catchments	9	14	0.14	0.017
Among populations within catchments	7	32	0.46	0.000
Among individuals within populations	595	54	0.37	0.000

The degrees of freedom (d.f.), percentage of total variation, fixation index for each hierarchical level and the significance of each comparison. (a) Upper Murray versus Lower Murray, (b) Upper Murray versus Upper Darling, (c) Upper Darling versus Lower Murray and (d) catchment-level AMOVAs. Significant *P*-values are in bold.

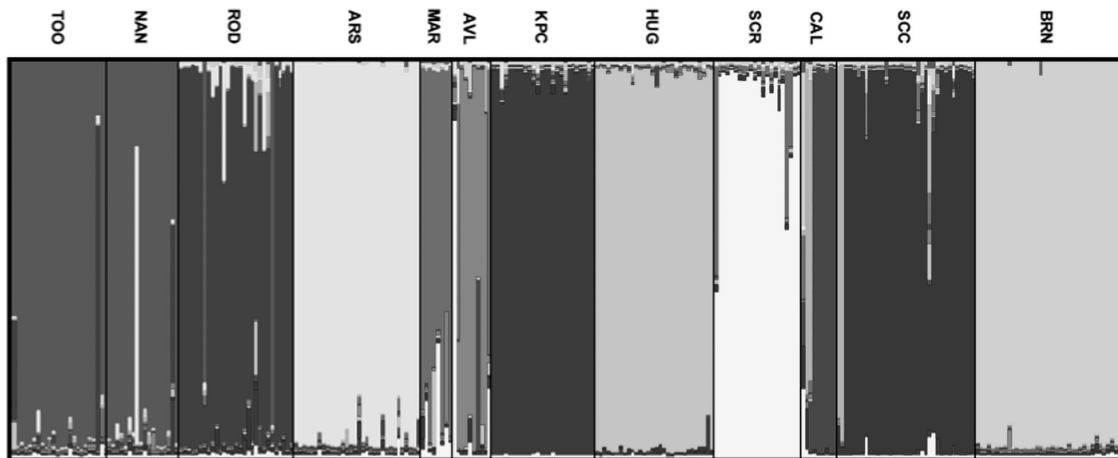


Figure 2 STRUCTURE plot depicting 11 inferred population clusters for *G. marmoratus* in the MDB. Only sites with ≥ 8 sampled individuals were included. Each bar represents an individual and the color represents the proportion of membership to each cluster. The abbreviation of the source population follows Table 1 and black lines delineate the boundaries of the source populations.

(Wilson and Rannala, 2003). Overall, migration analyses strongly corroborate the results of population differentiation based on various analyses and the individual assignment, indicating that MDB river blackfish are composed of a minimum of 11 genetically distinct and currently isolated populations.

Influence of genetic differentiation on genetic diversity

As expected, population estimates of genetic diversity (for example, A_r and H_E) were significantly correlated ($P < 0.001$). A strong negative relationship was found between genetic diversity and population genetic differentiation ($r^2 = 0.923$, $P < 0.001$; Supplementary Figure S1). This indicates that the most genetically divergent populations have lower levels of genetic diversity.

Landscape genetics

The model that best explained the impact of environmental factors on genetic diversity included both average river slope and land use ($r^2 = 0.312$; Table 4). However, hierarchical regression showed that land use did not add significantly to the predictive power of the model after controlling for the effect of river slope. The third ranked model included only river slope, which accounted for 56.3% of the variation in genetic diversity, and was the only other model that accounted for a significant amount of variation in genetic diversity ($r^2 = 0.194$; Table 4).

DISCUSSION

Poor dispersal species act as important conservative baselines for biodiversity management, as they are more likely than vagile species to

Table 3 Recent migration rates among *Gadopsis marmoratus* populations in the Murray–Darling Basin estimated in BAYESASS

Migration from	To										
	BRN	SCC	CAL	SCR	HUG	KPC	AVL	MAR	ARS	ROD	NAN/TOO
BRN	0.93	0.01	0.01	0.01	0.01	0.01	0.01	0.01	0.01	0.01	0.01
SCC	0.01	0.93	0.01	0.01	0.01	0.01	0.01	0.01	0.01	0.01	0.01
CAL	0.02	0.03	0.80	0.03	0.02	0.02	0.02	0.02	0.02	0.02	0.02
SCR	0.01	0.01	0.01	0.90	0.01	0.01	0.01	0.01	0.01	0.01	0.01
HUG	0.01	0.01	0.01	0.01	0.92	0.01	0.01	0.01	0.01	0.01	0.01
KPC	0.01	0.01	0.01	0.01	0.01	0.91	0.01	0.01	0.01	0.01	0.01
AVL	0.02	0.02	0.02	0.03	0.02	0.02	0.82	0.02	0.02	0.02	0.02
MAR	0.02	0.02	0.02	0.17	0.02	0.02	0.02	0.69	0.02	0.02	0.02
ARS	0.01	0.01	0.01	0.01	0.01	0.01	0.01	0.01	0.92	0.01	0.01
ROD	0.01	0.01	0.01	0.01	0.01	0.01	0.01	0.01	0.01	0.89	0.03
NAN and TOO	0.01	0.01	0.01	0.01	0.01	0.01	0.01	0.01	0.01	0.02	0.91

Bold denotes the percentage of nonmigrant (resident) individuals in the source population. The 95% confidence intervals surrounding the migration rate estimates are in Supplementary Table S5.

Table 4 Models of environmental variables potentially accounting for the distribution of genetic diversity (*Ar*) of *Gadopsis marmoratus* in the Murray–Darling Basin

Model rank	Slope	Land use	Barrier	AIC _c	ΔAIC	R ² (adj)	ANOVA	Sig. Var
1	−0.08581	0.11878		12.42	0.00	0.312	0.029	Slope
2	−0.09934	0.12241	−0.03509	13.10	0.68	0.302	0.080	Slope
3	−0.08973			13.71	1.29	0.194	0.043	Slope
4	−0.09853	0.12705	0.11573	14.84	2.42	0.290	0.060	Slope
IC (%)	52.14	34.82	3.09					

Abbreviations: AIC_c, Akaike's information criterion adjusted for small sample sizes; ANOVA, analysis of variance *P*-value for the significance of the multiple regression; IC (%), independent contribution of each environmental variable to the full model; *r*² (adj), *r*² adjusted for the number of variables in the multiple regression analysis; Sig. Var, the variables that have a significant contribution to the model.

be negatively affected by the ecological and evolutionary processes accompanying habitat fragmentation. Large-scale habitat fragmentation, such as that observed in the MDB (Leblanc *et al.*, 2012), initially results in increasing isolation of demes and, second, in a decrease of the total amount of habitat available for each deme (Simberloff, 1998). Understanding the genetic consequences of these impacts, both at the deme and species range levels, enables process-oriented strategies for conservation management to be implemented at appropriate spatial scales (Young and Clarke, 2000). Here we have used the poorly dispersive and threatened *G. marmoratus* as a surrogate indicator system for assessing the effects of fragmentation in biotas from highly modified river basins.

Our results indicate that *G. marmoratus* displays all the hallmarks of severe habitat fragmentation, namely scattered, small, demographically isolated, and genetically depauperate populations. Such findings make it very difficult to prioritize conservation actions throughout the basin based on patterns inferred from genetic information. Nonetheless, by combining extensive and hierarchically nested population sampling (that is, from the scale of stream, catchment, to region within an expansive river basin) with expert opinion and field observations, our study identified key associations between landscape features and genetic variation that would otherwise not be detectable in conventional population genetic surveys. As discussed below, these results can be integrated into an objective framework for prioritizing management strategies aimed at maintaining population persistence in poor dispersal species affected by habitat fragmentation.

Remarkably strong population structure in a recently fragmented ecosystem

G. marmoratus is represented by a strongly structured lineage in the MDB (for example, global *F*_{st} of 0.45). The inferred levels of population differentiation can be considered particularly high as they are based on hypervariable markers that are expected to show lower differentiation than markers with lower within-population heterozygosity (Hedrick, 1999). Irrespective of whether populations came from within the same or separate catchments, they are all essentially isolated, with no contemporary gene flow between them (Figure 2 and Supplementary Tables S3–S6). Previous mitochondrial DNA and allozyme analyses covering the entire range of *Gadopsis* (including many of the populations examined herein) confirm that our samples represent a single candidate species and a single ESU (that is, evolutionarily significant unit) in the MDB (Hammer *et al.*, 2014), and thus exclude the possibility that cryptic lineages are driving this result within our data set. Many native MDB species have poor or moderate dispersal potential and a relatively high degree of habitat specialization. These characteristics, in combination with human-driven fragmentation and disturbance of the basin (Lintermans, 2007; Hammer *et al.*, 2013), account for the high population structure and isolation typically detected in population genetic studies of MDB fishes (see, for example, Faulks *et al.*, 2011; Brauer *et al.*, 2013; Attard *et al.*, 2016; Cole *et al.*, 2016; Sasaki *et al.*, 2016). Therefore, our microsatellite results support the proposal that *G. marmoratus* represents a valuable surrogate indicator species of how fragmentation might affect co-occurring low dispersal species in affected riverine ecosystems.

It is not surprising that no signal of IBD was detected at the regional scale given the low dispersal potential of *G. marmoratus* and large intervening sections of apparently unsuitable modified lowland river habitat (Khan *et al.*, 2004; Koster and Crook, 2008). In highly fragmented environments this pattern can be disrupted by restricted gene flow between demes (Broquet *et al.*, 2006). Patterns of IBD may still exist within streams or within catchments where continuous distribution of the species remains in longer river reaches (for example, the Ovens River (Lintermans, 2007)). It is expected that genetic similarity between individuals persists only over the spatial scale of a stream, as predicted for a poor disperser (Hughes *et al.*, 2012).

It is widely understood that both contemporary and historical gene flow can influence the architecture of genetic variation in populations, and distinguishing between the two can be difficult (Poissant *et al.*, 2005). It is likely that both the recent habitat fragmentation (past 200 years post European settlement) and species life history account for the strong contemporary population structure observed here. This hypothesis is supported by differences in the estimated widespread historic distribution compared with the current highly restricted range of *G. marmoratus* in the MDB (Lintermans, 2007) and by the shallow phylogeography displayed by this species in the MDB (Hammer *et al.*, 2014). Our data also show that an unperturbed reference population from the lower Murray (Tookayerta Creek), which is by far the strongest remnant population and has experienced less decline (Hammer, 2004), had higher genetic variation than most other populations that experienced human impacts (Table 1). These findings are also consistent with coalescent-based and genome-wide analyses of a co-occurring poor dispersal species in the MDB, the southern pygmy perch *Nannoperca australis*. Here, isolation and basin-wide demographic declines observed for several populations are better explained by human-driven disturbances that post-date European settlement than by the historical effects of genetic drift (Attard *et al.*, 2016; Brauer *et al.*, 2016; Cole *et al.*, 2016). Such analyses would probably prove useful to better delineate factors that have shaped the history of isolation of *G. marmoratus* populations.

The inferred overall pattern led us to reject the stream hierarchy model for *G. marmoratus* in the MDB and to propose either the Death Valley model or a nonequilibrium model of population structure (Meffe and Vrijenhoek, 1988; Hughes *et al.*, 2009). The Death Valley model predicts that remnant populations across the MBD landscape have a high level of between-population structure, but no significant basin or catchment structure, no IBD, no gene flow and small local population size, perhaps driven by naturally chaotic and variable patterns of stream connectivity exacerbated by human-driven change (Walker *et al.*, 1995). The nonequilibrium model is defined by a high level of local extinction with infrequent recolonization events (Nei and Chakravarti, 1977), indicative of a species decline in fragmented habitats. The proposed models further emphasize the extinction risk for *G. marmoratus*.

Conserving and managing population diversity and uniqueness across the basin

The current fragmented nature of *G. marmoratus* populations makes each isolated population extremely vulnerable to stochastic events (Fagan *et al.*, 2005). This is particularly true given its low levels of genetic variation relative to other freshwater fishes (DeWoody and Avise, 2000) and values of inbreeding coefficient reported for populations across the MDB (Table 1). Conservation implications from population genetic data have traditionally focused on management units (MUs) that are demes with significantly divergent allele

frequencies that occur within an ESU (Moritz, 1994). A range of analytical methods consistently indicated that each *G. marmoratus* population we assessed in the MDB currently represents an isolated demographic unit. Hence, we identified a minimum of 11 potential MUs, with the likely presence of others because of fish from undersampled locations not being assigned to any of the population clusters (MUs listed in Supplementary Table S1). Assessing the true number of MUs justifies further sampling effort across catchments and within streams.

The contemporary genetic architecture of *G. marmoratus* in the MDB makes it difficult to prioritize conservation efforts across this vast river basin. Conservation management actions should normally focus on divergent (and potentially locally adapted) populations with high levels of genetic diversity to give the species the best chance of persistence into the future (Hughes *et al.*, 2003; Coleman *et al.*, 2013; Brauer *et al.*, 2016). We found a strong negative relationship between genetic diversity and population differentiation in this species. The highly divergent populations showed the lowest levels of genetic diversity (Supplementary Figure S1), possibly reflecting the influence of genetic drift in currently small and isolated populations. If management efforts were to be prioritized based on differentiation alone, the species diversity as a whole could be eroded over time, leading to an increased chance of extinction (Coleman *et al.*, 2013). For example, focusing efforts on Browns Creek (BRN) and King Parrot Creek (KPC) would conserve the most differentiated populations, but both show relatively few alleles (1.92 and 2.08, respectively) and no or few private alleles (0.00 and 0.17, respectively). These MUs contain a subset of alleles found in other populations and their high differentiation is likely the result of recent population declines and small effective population size. On the other hand, limited conservation resources could be more efficiently directed toward MUs such as Hughes Creek (HUG) and the Tookayerta Creek (TOO/NAN), as they are genetically divergent (Supplementary Table S3) while maintaining relatively high levels of diversity ($Ar = 2.38$ and 2.30 , respectively) and a high proportion of private alleles (0.50 and 0.25, respectively). Based on this concept, in addition to HUG and TOO, the other high priority MUs that should be targeted by management actions (described below) are Molong Creek (MOL) and Catherines Creek (CAT) (Figure 3).

The diverse and divergent MUs identified here represent appropriate conservation targets for a variety of management agencies across multiple jurisdictions of the MDB. A short-term *ex situ* management

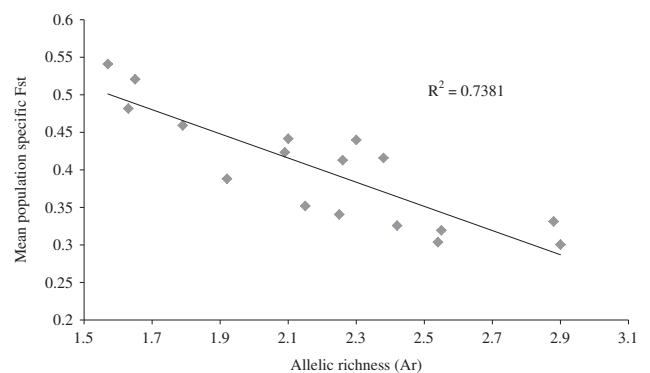


Figure 3 Population genetic diversity (Ar) plotted against genetic uniqueness (population-specific F_{st}) for *G. marmoratus* in the MDB. The correlation was highly significant ($P < 0.001$).

action recently conducted with endangered fishes in the MDB is genetically informed captive breeding followed by reintroduction to the wild (Hammer *et al.*, 2013; Attard *et al.*, 2016). This was implemented for four endangered species in the lower Murray and was particularly successful with two species of pygmy perch. Genetic diversity in pygmy perch was maintained after one generation of captive breeding, a few thousand offspring were reintroduced to the wild after some habitat recovery, and subsequent recapturing events demonstrated not only survival but also recruitment of captive-born individuals (Attard *et al.*, 2016). However, the same program had very limited success in breeding *G. marmoratus* in captivity as a larger and territorial species. In spite of using controlled trials in a dedicated aquaculture facility, most spawning attempts proved unsuccessful and only eight captive-reared juveniles were produced (Westergaard and Ye, 2010), emphasizing the need for further research into *G. marmoratus* captive breeding (Hammer *et al.*, 2013). Because of these issues, we propose that conservation agencies should instead focus on maintaining and restoring core habitat (for example, environmental water allocation, riparian restoration and enhancement of water quality; *sensu* Hammer *et al.*, 2013) and that these *in situ* management actions should be done at the level of catchments.

A key conservation management action for species with fragmented distributions, reduced genetic diversity and lowered adaptive potential is to conduct assisted gene flow by moving individuals between populations (Tallmon *et al.*, 2004; Frankham, 2015; Whiteley *et al.*, 2015). Translocation of genetically diverse individuals between recently isolated populations is a form of genetic rescue, a management tool that can increase neutral and adaptive genetic diversity, population fitness and evolutionary potential (Frankham, 2015; Whiteley *et al.*, 2015). Genetic rescue offsets the detrimental effects of drift and inbreeding in small populations, provides population resilience to environmental change and halts biodiversity loss (Weeks *et al.*, 2011; Frankham, 2015; Whiteley *et al.*, 2015). Population translocations remain a controversial topic among conservation biologists, in part because of the potentially negative effects of outcrossing (that is, outbreeding depression). However, recent meta-analyses have consistently indicated that concerns of outcrossing small populations are not justified (provided an appropriate systematic framework is established, that is, excluding mixing of species and ESUs) and have called for a much broader use of assisted gene flow to genetically rescue small inbred populations (Frankham, 2015; Whiteley *et al.*, 2015). These studies also showed that outbreeding depression generally increases with genetic, geographic and environmental distance (Whiteley *et al.*, 2015) and confirmed the effectiveness of decision trees (for example, same species, no fixed chromosomal differences, adapted to similar environments and gene flow within the past 500 years; Frankham *et al.*, 2011) in assessing the risk of outbreeding depression (Frankham, 2015).

G. marmoratus is represented in the MDB by a single genealogical lineage (that is, one ESU) that shows very low divergence across the basin (mean within lineage mitochondrial DNA distance of 0.45%; Hammer *et al.*, 2014). Its phylogeography is more indicative of recent range expansion (for example, late Pleistocene) across the MDB rather than relictual persistence (Hammer *et al.*, 2014). Such a pattern is shared by many other widespread MDB fishes (see, for example, Faulks *et al.*, 2010; Unmack *et al.*, 2013) and appears related to the much greater flow of ancestral MDB rivers during the Pleistocene (Pels, 1964). As a specific conservation action, we propose that assisted gene flow should be performed within MDB *G. marmoratus*. This should be at regular intervals and involve moving individuals from four of the five targeted *G. marmoratus* MUs (listed above) to

populations with lower genetic diversity found in catchments exposed to similar environmental conditions. Movement within the three major MDB regions may be most practical considering the potentially different climates and disease histories in these widely separated areas. In contrast, the Tookayerta Creek Catchment MU (TOO/NAN) is a genetically divergent and heterogeneous population occurring in atypical habitat (acidic peat swamp system), suggestive of a separate genetic and evolutionary trajectory (Hammer *et al.*, 2014), and this is an example where translocation into or out of an MU should be avoided.

Pools promote diversity

Our model selection approach, hierarchical regression and hierarchical partitioning (Table 4 and Supplementary Figure S2) identified average river slope as the only major factor influencing genetic diversity in *G. marmoratus* in the MDB. The observed correlation is consistent with our initial hypothesis that a low average slope would increase the area of available habitat (deep slow-flowing pools), therefore supporting larger populations and higher genetic diversity. Our results may also reflect the negative influence of flow velocity on population size, given that *G. marmoratus* cannot sustain long periods of intense swimming (Dobson and Baldwin, 1981). The influence of river slope is supported by previous habitat use, mark recapture and radio telemetry studies that concluded that *G. marmoratus* have a strong affinity to slow-flowing pools and only use riffle habitat occasionally for short periods of time (Khan *et al.*, 2004). The identification of a single proxy for genetic diversity (slope) does not necessarily imply that other habitat features are not influencing population size. Most of the few studies that identified relationships between habitat and genetic diversity had access to fine-scale habitat data and included multiple samples within a predefined habitat type (see, for example, Cena *et al.*, 2006; Balkenhol *et al.*, 2013). The vast geographic range but threatened status of *G. marmoratus* precluded replication of sampling within habitat types. In addition, detailed spatial mapping of riparian vegetation, small in-stream structures and the presence of introduced species are not available across the entire MDB. These variables are likely to influence the dynamics and demography of a range of native freshwater species (Jackson and Williams, 1980; Grown *et al.*, 1998; Erskine and Webb, 2003). These issues, in combination with the relatively low levels of variation found in our microsatellite data set and the small size of some population samples, could potentially affect our ability to detect landscape genetic patterns.

CONCLUSIONS

We have shown *G. marmoratus* to be an ideal surrogate indicator species for assessing landscape fragmentation, and in the process also gleaned key data with conservation implications for this poor dispersal and declining species. Our proposals of genetic rescue relate to building resilience in the interim to landscape restoration and in the face of climate change. Restorative actions are clearly required and can build upon the spatial management framework identified herein. Indeed, ongoing temporal genetic monitoring of populations could provide empirical and applied insights on both the effectiveness and scale of influence of restoration actions such as flow restoration, habitat improvements and catered translocations, as well as the real-time and lag effects from past and present threatening processes such as fragmentation (small populations) and climate change.

DATA ARCHIVING

Genotype data have been submitted to Dryad: doi:10.5061/dryad.d5842.

CONFLICT OF INTEREST

The authors declare no conflict of interest.

ACKNOWLEDGEMENTS

We thank the many people who helped with work in the field, lab and other aspects of the project, especially M Baltzly, C Bice, L Farrington, C Kemp, G Knowles, M Lintermans, J Lyon, R Remington, M Sasaki, S Ryan, D Sortino, M Tucker and S Westergaard. All collections were obtained under permit from various state fisheries agencies and research is under Flinders University Animal Welfare Committee approval E313. Financial support was provided by the Australian Research Council (LP100200409 to LB Beheregaray, J Harris and M Adams; and FT130101068 to LB Beheregaray).

- Akaike H (1973). Information theory and an extension of the maximum likelihood principle. In: Petrov BN, Csaki F (eds). *2nd International Symposium on Information Theory*, Akademiai Kiado: Budapest, Hungary, pp 267–281.
- Allison G, Cook PG, Barnett SR, Walker GR, Jolly ID, Hughes MW (1990). Land clearance and river salinisation in the western Murray Basin, Australia. *J Hydrol* **119**: 1–20.
- Arias M, Atteke C, Augusto S, Bailey J, Bazaga P, Beheregaray LB *et al.* (2013). Permanent genetic resources added to molecular ecology resources database 1 February 2013–31 March 2013. *Mol Ecol Resour* **13**: 760–762.
- Attard CRM, Möller LM, Sasaki M, Hammer MP, Bice CM, Brauer CJ *et al.* (2016). A novel holistic framework for genetic-based captive breeding and reintroduction programs. *Conserv Biol* **30**: 1060–1069.
- Balcombe N, Sheldon F, Capon S, Bond N, Hadwen W, Marsh N (2011). Climate-change threats to native fish in degraded rivers and floodplains of the Murray–Darling Basin, Australia. *Mar Freshwater Res* **62**: 1099–1114.
- Balkenhol N, Pardini R, Cornelius C, Fernandes F, Sommers S (2013). Landscape-level comparison of genetic diversity and differentiation in a small mammal inhabiting different fragmented landscapes of the Brazilian Atlantic Forest. *Conserv Genet* **14**: 355–367.
- Beheregaray LB, Sunnucks P (2000). Microsatellite loci isolated from *Odontesthes argentinensis* and the *O. perugiae* species group and their use in other South American silverside fish. *Mol Ecol* **9**: 629–631.
- Bilton D, Freeland J, Okamura B (2001). Dispersal in freshwater invertebrates. *Ann Rev Ecol Syst* **32**: 159–181.
- Bohonak A (2002). IBD (isolation by distance): a program for analyses of isolation by distance. *J Hered* **93**: 153–154.
- Boizard J, Magnan P, Angers B (2009). Effects of dynamic landscape elements on fish dispersal: the example of creek chub (*Semotilus atromaculatus*). *Mol Ecol* **18**: 430–441.
- Bond N, Lake P (2005). Ecological restoration and large-scale ecological disturbance: the effects of drought on the response by fish to a habitat restoration experiment. *Restor Ecol* **13**: 39–48.
- Brauer C, Unmack P, Hammer M, Adams M, Beheregaray LB (2013). Catchment-scale conservation units identified for the threatened Yarra pygmy perch (*Nannoperca obscura*) in highly modified river systems. *PLoS One* **8**: e82953.
- Brauer C, Hammer M, Beheregaray L (2016). Riverscape genomics of a fish species across a hydroclimatically heterogeneous river basin. *Mol Ecol* **25**: 5093–5113.
- Broquet T, Ray N, Petit E, Fryxell M, Burel F (2006). Genetic isolation by distance and landscape connectivity in the American marten (*Martes americana*). *Land Ecol* **21**: 877–889.
- Cena C, Morgan E, Malette D, Heath D (2006). Inbreeding, outbreeding and environmental effects on genetic diversity in 46 walleye (*Sander vitreus*) populations. *Mol Ecol* **15**: 303–320.
- Cole TL, Hammer MP, Unmack PJ, Teske PR, Brauer CJ, Adams M *et al.* (2016). Range-wide fragmentation in a threatened fish associated with post-European settlement modification in the Murray–Darling Basin, Australia. *Conserv Genet* **17**: 1377.
- Coleman R, Weeks R, Hoffmann A (2013). Balancing genetic uniqueness and genetic variation in determining conservation and translocation strategies: a comprehensive case study of threatened dwarf galaxias, *Galaxiella pusilla* (Mack) (Pisces: Galaxiidae). *Mol Ecol* **22**: 1820–1835.
- Croke C, Hairsine P (2006). Sediment delivery in managed forests: a review. *Environ Rev* **14**: 59–87.
- CSIRO (2008). Water availability in the Murray–Darling Basin. A report to the Australian Government from the CSIRO Murray–Darling Basin Sustainable Yields Project. CSIRO, Australia, p 67.
- DeWoody JA, Avise JC (2000). Microsatellite variation in marine, freshwater and anadromous fishes compared with other animals. *J Fish Biol* **56**: 461–473.
- Dobson G, Baldwin J (1981). Regulation of blood oxygen affinity in the Australian Blackfish *Gadopsis marmoratus*: I. Correlations between oxygen-binding properties, habitat and swimming behaviour. *Exp Biol* **99**: 223–243.
- Earl D, vonHoldt B (2012). STRUCTURE HARVESTER: a website and program for visualizing STRUCTURE output and implementing the Evanno method. *Conserv Genet Resour* **4**: 359–361.
- Erskine W, Webb A (2003). Desnagging to resnagging: new directions in river rehabilitation in southeastern Australia. *River Res Appl* **19**: 233–249.
- ESRI (2012). ArcMap 10.1. Environmental Systems Research Institute Inc., Redlands, CA, USA.
- Evanno G, Regnaut S, Goudet J (2005). Detecting the number of clusters of individuals using the software structure: a simulation study. *Mol Ecol* **14**: 2611–2620.
- Excoffier L, Lischer L (2010). Arlequin suite ver 3.5: a new series of programs to perform population genetics analyses under Linux and Windows. *Mol Ecol Resour* **10**: 564–567.
- Fagan W, Aumann C, Kennedy M, Unmack P (2005). Rarity, fragmentation and the scale dependence of extinction risk in desert fishes. *Ecology* **86**: 34–41.
- Fahrig L (2003). Effects of habitat fragmentation on biodiversity. *Annu Rev Ecol Syst* **34**: 487–515.
- Faulks L, Gilligan M, Beheregaray L (2010). Islands of water in a sea of dry land: hydrological regime predicts genetic diversity and dispersal in a widespread fish from Australia's arid zone, the golden perch (*Macquaria ambigua*). *Mol Ecol* **19**: 4723–4737.
- Faulks L, Gilligan M, Beheregaray L (2011). The role of anthropogenic vs. natural in-stream structures in determining connectivity and genetic diversity in an endangered freshwater fish, Macquarie perch (*Macquaria australasica*). *Evol Appl* **4**: 589–601.
- Foll M, Gaggiotti O (2006). Identifying the environmental factors that determine the genetic structure of populations. *Genetics* **174**: 875–891.
- Frankham R, Ballou J, Briscoe D (2010). *Introduction to Conservation Genetics*. 2nd edn. Cambridge University Press: Cambridge.
- Frankham R, Ballou J, Eldridge D, Lacy C, Ralls K, Dudash R (2011). Predicting the probability of outbreeding depression. *Conserv Biol* **25**: 465–475.
- Frankham R (2015). Genetic rescue of small inbred populations: meta-analysis reveals large and consistent benefits of gene flow. *Mol Ecol* **24**: 2610–2618.
- Fausch KD, Torgersen CE, Baxter C, Hiram WL (2002). Landscapes to riverscapes: bridging the gap between research and conservation of stream fishes; a continuous view of the river is needed to understand how processes interacting among scales set the context for stream fishes and their habitat. *Bioscience* **52**: 483–498.
- Goudet J (2001). FSTAT 2.9. 3.2, a program to estimate and test gene diversities and fixation indices. See <http://www2.unil.ch/popgen/softwares/fstat.htm>.
- Growth IO, Pollard DA, Gehrke PC (1998). Changes in river fish assemblages associated with vegetated and degraded banks, upstream of and within nutrient-enriched zones. *Fish Manag Ecol* **5**: 55–69.
- Hammer M (2004). *Eastern Mount Lofty Fish Inventory: Distribution and Conservation of Freshwater Fishes of Tributaries to the Lower River Murray, South Australia*. Native Fish Australia (SA) Inc. and River Murray Catchment Water Management Board: Adelaide.
- Hammer M, Bice C, Hall A, Frears A, Watt A, Whiterod N (2013). Freshwater fish conservation in the face of critical water shortages in the southern Murray–Darling Basin, Australia. *Mar Freshwater Res* **64**: 807–821.
- Hammer M, Unmack P, Adams M, Tarmo R, Johnson J (2014). A multigene molecular assessment of cryptic biodiversity in the iconic freshwater blackfishes (Teleostei: Percichthyidae: Gadopsis) of south-eastern Australia. *Biol J Linn Soc* **111**: 521–540.
- Hanski I, Gaggiotti O (eds). (2004). *Ecology, Genetics, and Evolution of Metapopulations*. Elsevier, Academic Press: Amsterdam, p 696.
- Hardy O, Vekemans X (2002). spagedi: a versatile computer program to analyse spatial genetic structure at the individual or population levels. *Mol Ecol Notes* **2**: 618–620.
- Hedrick P (1999). Perspective: highly variable loci and their interpretation in evolution and conservation. *Evolution* **53**: 313–318.
- Hopken M, Douglas R, Douglas E (2013). Stream hierarchy defines riverscape genetics of a North American desert fish. *Mol Ecol* **22**: 956–971.
- Hughes J, Schmidt J, Finn S (2009). Genes in streams: using DNA to understand the movement of freshwater fauna and their riverine habitat. *Bioscience* **59**: 573–583.
- Hughes J, Real K, Marshall J, Schmidt D (2012). Extreme genetic structure in a small-bodied freshwater fish, the purple spotted gudgeon, *Mogurnda adspersa* (Eleotridae). *PLoS One* **7**: e40546.
- Hughey K, Cullen R, Moran E (2003). Integrating economics into priority setting and evaluation in conservation management. *Conserv Biol* **17**: 93–103.
- Jackson P (1978). Spawning and early development of the river blackfish (*Gadopsis marmoratus*) (Gadopsiformes: Gadopsidae), in the McKenzie River, Victoria. *Mar Freshwater Res* **29**: 293–298.
- Jackson P, Williams W (1980). Effects of brown trout (*Salmo trutta*), on the distribution of some native fishes in three areas of southern Victoria. *Mar Freshwater Res* **31**: 61–67.
- Jakobsson M, Rosenberg N (2007). CLUMPP: a cluster matching and permutation program for dealing with label switching and multimodality in analysis of population structure. *Bioinformatics* **23**: 1801–1806.
- Jenkins D, Carey M, Czerniewska J, Fletcher J, Hether T, Jones A (2010). A meta-analysis of isolation by distance: relic or reference standard for landscape genetics? *Ecography* **33**: 315–320.
- Kalinowski ST (2005). Hp-rare 1.0: a computer program for performing rarefaction on measures of allelic richness. *Mol Ecol Notes* **5**: 187–189.
- Khan M, Khan A, Wilson E (2004). Habitat use and movement of river blackfish (*Gadopsis marmoratus* R.) in a highly modified Victorian stream, Australia. *Ecol Freshw Fish* **13**: 285–293.
- Koster W, Crook D (2008). Diurnal and nocturnal movements of river blackfish (*Gadopsis marmoratus*) in a south-eastern Australian upland stream. *Ecol Freshw Fish* **17**: 146–154.
- Lake J (1971). *Freshwater Fishes and Rivers of Australia*. Thomas Nelson: Melbourne.

- Leblanc M, Tweed S, Van Dijk A, Timbal B (2012). A review of historic and future hydrological changes in the Murray-Darling Basin. *Global Planet Change* **80**: 226–246.
- Leberg P (2002). Estimating allelic richness: Effects of sample size and bottlenecks. *Mol Ecol* **11**: 2445–2449.
- Legendre P, Fortin M (2010). Comparison of the Mantel test and alternative approaches for detecting complex multivariate relationships in the spatial analysis of genetic data. *Mol Ecol Resour* **10**: 831–844.
- Lintermans M (2007). *Fishes of the Murray-Darling Basin: An Introductory Guide*. Murray-Darling Basin Commission: Canberra.
- Lindenmayer DB, Likens GE (2011). Direct measurement versus surrogate indicator species for evaluating environmental change and biodiversity loss. *Ecosystems* **14**: 47–59.
- Manel S, Schwartz K, Luikart G, Taberlet P (2003). Landscape genetics: combining landscape ecology and population genetics. *Trends Ecol Evol* **20**: 136–142.
- McCraney W, Goldsmith G, Jacobs K, Kinziger P (2010). Rampant drift in artificially fragmented populations of the endangered tidewater goby (*Eucyclogobius newberryi*). *Mol Ecol* **19**: 3315–3327.
- Meffe G, Vrijenhoek R (1988). Conservation genetics in the management of desert fishes. *Conserv Biol* **2**: 157–169.
- Miller A, Waggy G, Ryan G, Austin M (2004). Mitochondrial 12S rRNA sequences support the existence of a third species of freshwater blackfish (Percichthyidae: *Gadopsis*) from south-eastern Australia. *Mem Mus Vic* **61**: 121–127.
- Möller M, Beheregaray B (2004). Genetic evidence of sex-biased dispersal in resident bottlenose dolphins (*Tursiops aduncus*). *Mol Ecol* **13**: 1607–1612.
- Moritz C (1994). Defining 'evolutionarily significant units' for conservation. *Trends Ecol Evol* **9**: 373–375.
- Nei M, Chakravarti A (1977). Drift variances of FST and GST statistics obtained from a finite number of isolated populations. *Theor Popul Biol* **11**: 307–325.
- Nei M, Maruyama T, Chakraborty R (1975). Bottleneck effect and genetic-variability in populations. *Evolution* **29**: 1–10.
- Osborne M, Perkin J, Gido K, Turner T (2014). Comparative riverscape genetics reveals reservoirs of genetic diversity for conservation and restoration of Great Plains fishes. *Mol Ecol* **23**: 5663–5679.
- Ovenden J, White G, Sanger C (1988). Evolutionary relationships of 180 *Gadopsis* spp. inferred from restriction enzyme analysis of their mitochondrial DNA. *J Fish Biol* **32**: 137–148.
- Palmer M, Liermann R, Nilsson C, Florke M, Alcamo J, Lake S (2008). Climate change and the world's river basins: anticipating management options. *Front Ecol Environ* **6**: 81–89.
- Pels S (1964). The present and ancestral Murray River system. *Aust Geogr Stud* **2**: 111–119.
- Piry S, Alapetite A, Cornuet M, Paetkau D, Baudouin L, Estoup A (2004). GENECLASS2: a software for genetic assignment and first-generation migrant detection. *J Hered* **95**: 536–539.
- Poissant J, Knight W, Ferguson M (2005). Nonequilibrium conditions following landscape rearrangement: the relative contribution of past and current hydrological landscapes on the genetic structure of a stream-dwelling fish. *Mol Ecol* **14**: 1321–1331.
- Pritchard J, Stephens M, Donnelly P (2000). Inference of population structure using multilocus genotype data. *Genetics* **155**: 945–959.
- Rannala B, Mountain L (1997). Detecting immigration by using multilocus genotypes. *Proc Natl Acad Sci USA* **94**: 9197–9201.
- Raymond M, Rousset F (1995). GENEPOP (version 1.2): Population genetics software for exact tests and ecumenicism. *J Hered* **86**: 248–249.
- Rice W (1989). Analyzing tables of statistical tests. *Evolution* **43**: 223–225.
- Roberts J, Angermeier L, Hallerman M (2013). Distance, dams and drift: what structures populations of an endangered, benthic stream fish? *Freshwater Biol* **58**: 2050–2064.
- Rodrigues ASL, Brooks TM (2007). Shortcuts for biodiversity conservation planning: the effectiveness of surrogates. *Annu Rev Ecol Evol Syst* **38**: 713–737.
- Rosenberg N (2004). Distruct: a program for the graphical display of population structure. *Mol Ecol Notes* **4**: 137–138.
- Ryan S, Miller D, Austin M (2004). Allozyme variation and taxonomy of the river blackfish, *Gadopsis marmoratus* Richardson, in western Victoria. *Proc R Soc Vic* **116**: 191–199.
- Sasaki M, Hammer MP, Unmack PJ, Adams M, Beheregaray LB (2016). Population genetics of a widely distributed small freshwater fish with varying conservation concerns: the southern purple-spotted gudgeon, *Mogurnda adspersa*. *Conserv Genet* **17**: 875–889.
- Sanger A (1984). Description of a new species of *Gadopsis* (Pisces: Gadopsidae) from Victoria. *Proc R Soc Vic* **96**: 93–97.
- Simberloff D (1998). The contribution of population and community biology to conservation science. *Annu Rev Ecol Syst* **19**: 473–511.
- Stein JL, Hutchinson MF, Stein JA (2014). A new stream and nested catchment framework for Australia. *Hydrol Earth Syst Sci* **18**: 1917–1933.
- Sunnucks P, Hales D (1996). Numerous transposed sequences of mitochondrial cytochrome oxidase I-II in aphids of the genus *Sitobion* (Hemiptera: Aphididae). *Mol Biol Evol* **13**: 510–524.
- Tallmon DA, Luikart G, Waples RS (2004). The alluring simplicity and complex reality of genetic rescue. *Trends Ecol Evol* **19**: 489–496.
- Trimble S, Mendel C (1995). The cow as a geomorphic agent - a critical review. *Geomorphology* **13**: 233–253.
- Unmack PJ, Hammer MP, Adams M, Johnson JB, Dowling TE (2013). The role of continental shelf width in determining freshwater phylogeographic patterns in south-eastern Australian pygmy perch (Teleostei: Percichthyidae). *Mol Ecol* **22**: 1683–1699.
- Van Oosterhout C, Hutchinson F, Wills M, Shipley P (2004). Micro-checker: software for identifying and correcting genotyping errors in microsatellite data. *Mol Ecol Note* **4**: 535–538.
- Van Strien M, Keller D, Holderegger R (2012). A new analytical approach to landscape genetic modelling: least-cost transect analysis and linear mixed models. *Mol Ecol* **21**: 4010–4023.
- Walker F, Sheldon F, Puckridge J (1995). A perspective on dryland river ecosystems. *Regul Rivers Res Manag* **11**: 85–104.
- Walsh C, Macnally R (2008). *The Hier.Part Package*. Available at <http://cran.r-project.org/>.
- Wang I, Savage K, Shaffer H (2009). Landscape genetics and least-cost path analysis reveal unexpected dispersal routes in the California tiger salamander (*Ambystoma californiense*). *Mol Ecol* **18**: 1365–1374.
- Weeks A, Sgro M, Young G, Frankham R, Mitchell J, Miller K (2011). Assessing the benefits and risks of translocations in changing environments: a genetic perspective. *Evol Appl* **4**: 709–725.
- Westergaard S, Ye Q (2010). A captive spawning and rearing trial of river blackfish (*Gadopsis marmoratus*): efforts towards saving local genetic assets with recognised conservation significance from the South Australian Murray-Darling Basin. SARDI publication number: F2010/000183-1. SARDI Aquatic Sciences, Adelaide.
- Whiteley A, Spruell P, Allendorf W (2006). Can common species provide valuable information for conservation? *Mol Ecol* **15**: 2767–2786.
- Whiteley A, Fitzpatrick S, Funk C, Tallmon D (2015). Genetic rescue to the rescue. *Trends Ecol Evol* **30**: 42–49.
- Wilson G, Rannala B (2003). Bayesian inference of recent migration rates using multilocus genotypes. *Genetics* **163**: 1177–1191.
- Wofford J, Gresswell E, Banks A (2005). Influence of barriers to movement on within-watershed genetic variation of coastal cutthroat trout. *Ecol Appl* **15**: 628–637.
- Young A, Clarke G (2000). *Genetics, Demography and Viability of Fragmented Populations (Vol. 4)*. Cambridge University Press: Cambridge, UK.

Supplementary Information accompanies this paper on Heredity website (<http://www.nature.com/hdy>)